

February 26, 2025

**Attention:** Cecylia Garbacz  
TECHNICAL STANDARDS & SAFETY AUTHORITY  
345 CARLINGVIEW DRIVE  
TORONTO, ON M9W 6N9

The design submission, Tracking Number 2024-06754, Web Portal Number 2024-S4933, originally received on November 07, 2024 was surveyed and accepted for registration as follows:

**CRN :** 0C25486.52 **Accepted on:** February 26, 2025  
**Reg Type:** NEW DESIGN **Expiry Date:** September 23, 2034  
**Drawing No. :** CRN Scope of Registration, EN-FR-207 Rev C  
**Fitting type:** Series BLD Cryogenic Pressure Regulator  
Design registered in the name of : GENERANT COMPANY INC

Description	MAWP	Design Temperature	MDMT
Internal Pressure	4137kPa	107 °C	-196 °C

**The registration is conditional on your compliance with the following notes:**

*As indicated on AB-41 Statutory Declaration or AB-351 Declaration of Conformity form and submitted documentation, the code of construction is ASME B31.3.*

- It is our understanding that the fitting(s), included as the scope of this submission, that is(are) subject to the Safety Codes Act shall comply with the requirements of the indicated Standard or Code of Construction on the AB-41 Statutory Declaration or AB-351 Declaration of Conformity as supported by the attached data which identifies the dimensions, materials of construction, press./temp. ratings and the basis for such ratings, and the identification marking of the fittings.*
- This registration is valid only for fittings fabricated at the location(s) covered by the QC certificate attached to the accepted AB-41 Statutory Declaration or AB-351 Declaration of Conformity form.*
- This registration is valid only until the indicated expiry date and only if the Manufacturer maintains a valid quality management system approved by an acceptable third-party agency, and maintains a valid Certification of Authorization Permit if required by the jurisdiction where manufacturing takes place, until that date.*
- Should the approval of the quality management system lapse before the expiry date indicated above, this registration shall become void.*

An invoice covering survey and registration fees will be forwarded from our Revenue Accounts.

If you have any question don't hesitate to contact me by phone at (587) 686-9349 or fax (780) 437-7787 or e-mail Wangi@absa.ca.

Sincerely,



WANG, IAN, P. Eng.  
DOP Cert. No. D00009643



Technical Standards and Safety Authority  
345 Carlingview Drive  
Toronto, Ontario M9W 6N9  
www.tssa.org

Show facsimile of manufacturer's logo or trademark, as it will appear on the fitting, in the space below

**GENERANT**

### STATUTORY DECLARATION Registration of Fittings

I, James Lesky, Director of Quality Assurance  
*(Name and Position, e.g. President, Plant Manager, Chief Engineer)*

of Generant Company, Inc.  
*(Name of Manufacturer)*

Located at 1865 Route 23 South, P.O. Box 768, Butler, NJ 07405 973-838-6500 973-838-4888  
*(Plant Address) (Telephone No.) (Fax No.)*

do solemnly declare that the fittings listed hereunder, which are subject to the **Technical Standards and Safety Act**, Boilers and Pressure Vessels Regulation, comply with all of the requirements of ASME B31.3 Process Piping Code  
*(Title of recognized North American Standard)*

which specifies the dimensions, materials of construction, pressure/temperature ratings, identification marking the fittings and service;

or are not covered by the provisions of a recognized North American standard and are therefore manufactured to comply with \_\_\_\_\_ as supported by the attached data which identifies the dimensions, material of construction, pressure/temperature ratings and the basis for such ratings, the marking of the fitting for identification and service.

I further declare that the manufacture of these fittings is controlled by a quality system meeting the requirements of ISO 9001 which has been verified by the following authority, Kiwa

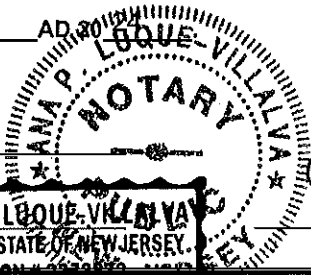
The items covered by this declaration, for which I seek registration, are category "C" type fittings. In support of this application, the following information and/or test data are attached as follows:  
ISO 9001 Certificate, BLD Series Tests, BOMs, Drawings, Design Calculations  
*(drawings, calculations, test reports, etc.)*

Declared before me at Generant Company, Inc. in the State of New Jersey

the 11 day of June

Commissioner for Oaths:

Ana Patricia Luque-Villalva  
*(Printed name)*



[Signature]  
*(Signature of Declarer)*

To the best of my knowledge and belief, the application meets the requirements of the **Technical Standards and Safety Act**, Boilers and Pressure Vessels Regulation, and CSA Standard B51 and is accepted for registration in Category \_\_\_\_\_

CRN: \_\_\_\_\_

Registered by: \_\_\_\_\_

Dated: \_\_\_\_\_

NOTE: This registration expires on: **Sept 23, 2034**

2024-06754  
**ABSA**  
SAFETY CODES ACT - PROVINCE OF ALBERTA  
**ACCEPTED: OC25486 52**  
See acceptance letter for conditions of registration.  
Date: 2025-02-26 By: \_\_\_\_\_  
IAN WANG, P. Eng  
DOP: D00009643

This stamp and signature have been affixed electronically to this registered design as required by Section 20(1) of the Pressure Equipment Safety Regulation, in accordance with the Electronic Transactions Act

\*Information provided in this application is releasable under the Freedom of Information and Privacy Protection Act and may be disclosed upon request.

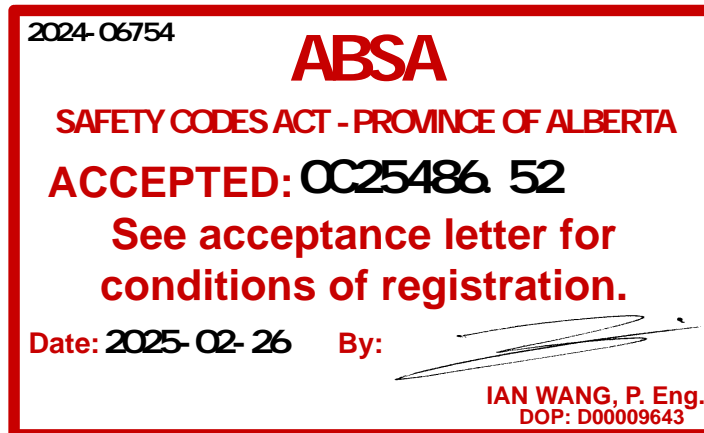


## CRN Scope of Registration: Series BLD (Cryogenic Pressure Regulator)

Series	ASME Design Standard	Size Range	Spring Models	Main Pressure Bearing Element Material	Operating Temperature Range	Device MAWP @ Max Temp	Device MAWP Burst Test Report
BLD	B31.3	3/8" & 1/2" NPT	A, B, C, D	ASTM B124 Brass (UNS C37700), ASTM B283 Brass (UNS C37700), ASTM A479 316 Stainless Steel (UNS S31600)	-320°F to 200°F	600 PSIG @ 225°F	Hydrostatic Test Report: BLD-500B Hydrostatic Burst Test Report

**Catalog References**

BLD Product Literature: SA.SL.BLD001\_B.5285  
 Drawing: 2BLD-375B-C-350  
 Drawing: 2BLD-500B-D-450  
 Drawing: 2BLD-500SS-B-125



This stamp and signature have been affixed electronically to this registered design as required by Section 20(1) of the Pressure Equipment Safety Regulation, in accordance with the Electronic Transactions Act.

**CRYOGENIC PRESSURE REGULATOR**

**1/2" NPT**

**Max. Inlet 600 PSI (41.4 bar)**

**BLD  
SERIES**

**DESCRIPTION:**

BLD Series cryogenic pressure regulators provide high flow and shut off quickly at the desired set pressure. The regulator design is a non-balanced, spring reference, reducing type regulator and comes with PTFE seals for cryogenic use. These regulators are optimized for use in pressure build applications. The solid (non-tied) metal diaphragms provide long lasting, leak-free performance. The springs for BLD Series regulators have been designed for optimized flow within the set pressure range. All BLD Series regulators are supplied cleaned for oxygen service.

**FEATURES:**

- **OPTIMIZED FOR HIGH FLOW:** Design provides high flow rates at low pressure differential.
- **QUICK SHUT-OFF:** Regulators transition from the flowing condition to shut in a tight pressure band.
- **SOLID, NON-TIED, DIAPHRAGM:** Solid diaphragm eliminates potential leak path and increases sensitivity.
- **DESIGNED FOR CRYOGENICS:** All materials were selected specifically for use in cryogenic environments.
- **CLEANED FOR OXYGEN SERVICE:** Regulators are cleaned for use in Oxygen service standard.
- **EXTENSIVELY FIELD QUALIFIED**

**TECHNICAL DATA:**

Max. Inlet Pressure: 600 PSIG (41.4 bar)

Outlet Pressure Ranges:

Spring	Outlet Pressure Range	PSI/Turn*
A	15 to 75 PSI (1.0 to 5.2 bar)	12
B	50 to 200 PSI (3.4 to 13.8 bar)	20
C	100 to 350 PSI (6.9 to 24.1 bar)	40
D	300 to 600 PSI (20.7 to 41.4 bar)	70

\*PSI/Turn Value is approximate change in setpoint per full turn of the adjustment screw (CW to increase, CCW to decrease), for reference only.

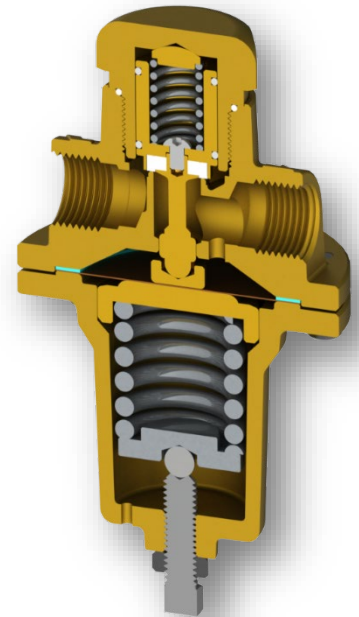
Temperature Range: -320° to 200°F (-196° to 93°C)

Full Open Flow Coefficient: 2.20

**MATERIALS OF CONSTRUCTION:**

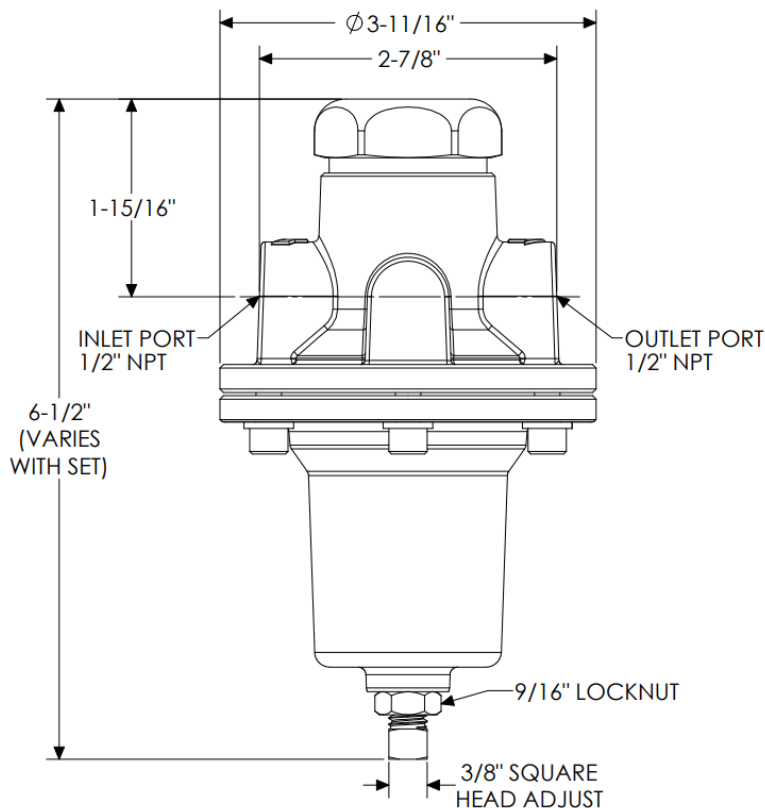
Component	Material
Body, Chamber	Brass, ASTM B124
Stem, Spring Retainer, Bottom Plug, BP Button, Stem Cap	Brass, ASTM B16
Adjustment Springs, Valve Spring	17-7PH SS
Adjustment Bolt, Locknut, Chamber Bolts, Lock Washers, Valve Screw	18-8 SS
Adjustment Screw Ball Bearing	440C SS
Diaphragms	Phosphor Bronze
Spring Button	303SS, ASTM A582
Valve Seal, Bottom Plug Seal, Chamber Seal, Valve O'Rings	PTFE

NOTE: Regulators are assembled with Dupont Krytox® lubricant.



# CRYOGENIC PRESSURE REGULATOR

## DIMENSIONAL DATA



## SPRING KITS

Part Number	Range
BLD-SK-A	15 to 75 PSI
BLD-SK-B	50 to 200 PSI
BLD-SK-C	100 to 350 PSI
BLD-SK-D	300 to 600 PSI

All Replacement Spring Kits come with a Replacement Spring, Spring Retainer, and Chamber Seal. D Range Spring Kits also come with a Chamber Ring.

## REPAIR KITS

Part Number	Description
BLD-RK	<b>Complete Repair Kit</b> Includes Valve Assembly, Valve Spring, Bottom Plug Seal, Chamber Seal, and Diaphragms (4)
BLD-VLV-RK	<b>Valve Only Repair Kit</b> Includes Valve Assembly, Valve Spring, and Bottom Plug Seal

## PERFORMANCE INFORMATION

Generant has flow information based on actual testing for both Pressure Build circuit applications and true cryogenic pressure reducing regulator applications. For more information, see Generant document SA.TD.BLD001.5256 *BLD Series Flow Datasheet*. The Full Open Flow Coefficient is listed in Technical Data.

## HOW TO ORDER

**2BLD - 500B - B - 125**

**SERIES**  
2BLD - 2 Port BLD Regulator

**INLET SIZE**  
500B - 1/2" NPT Ports, Brass

**SET PRESSURE**  
Specify Set Pressure in PSI  
OMIT FOR STANDARD SET  
(BY SPRING, SEE TABLE)

**OUTLET PRESSURE RANGE**

A - 15 to 75 PSI (1.0 to 5.2 bar)  
B - 50 to 200 PSI (3.4 to 13.8 bar)  
C - 100 to 350 PSI (6.9 to 24.1 bar)  
D - 300 to 600 PSI (20.7 to 41.4 bar)

Spring	Std. Set
A	35
B	125
C	300
D	450

Standard Sets do not come engraved with "Factory Set Pressure."

**ADAPTER KIT**  
Order Part Number **BLD-A401-B**.  
Adapter Kit consists of two (2) fittings for easy interchange with other commonly used 1/2" NPT PB Regulators. No hard piping changes required.

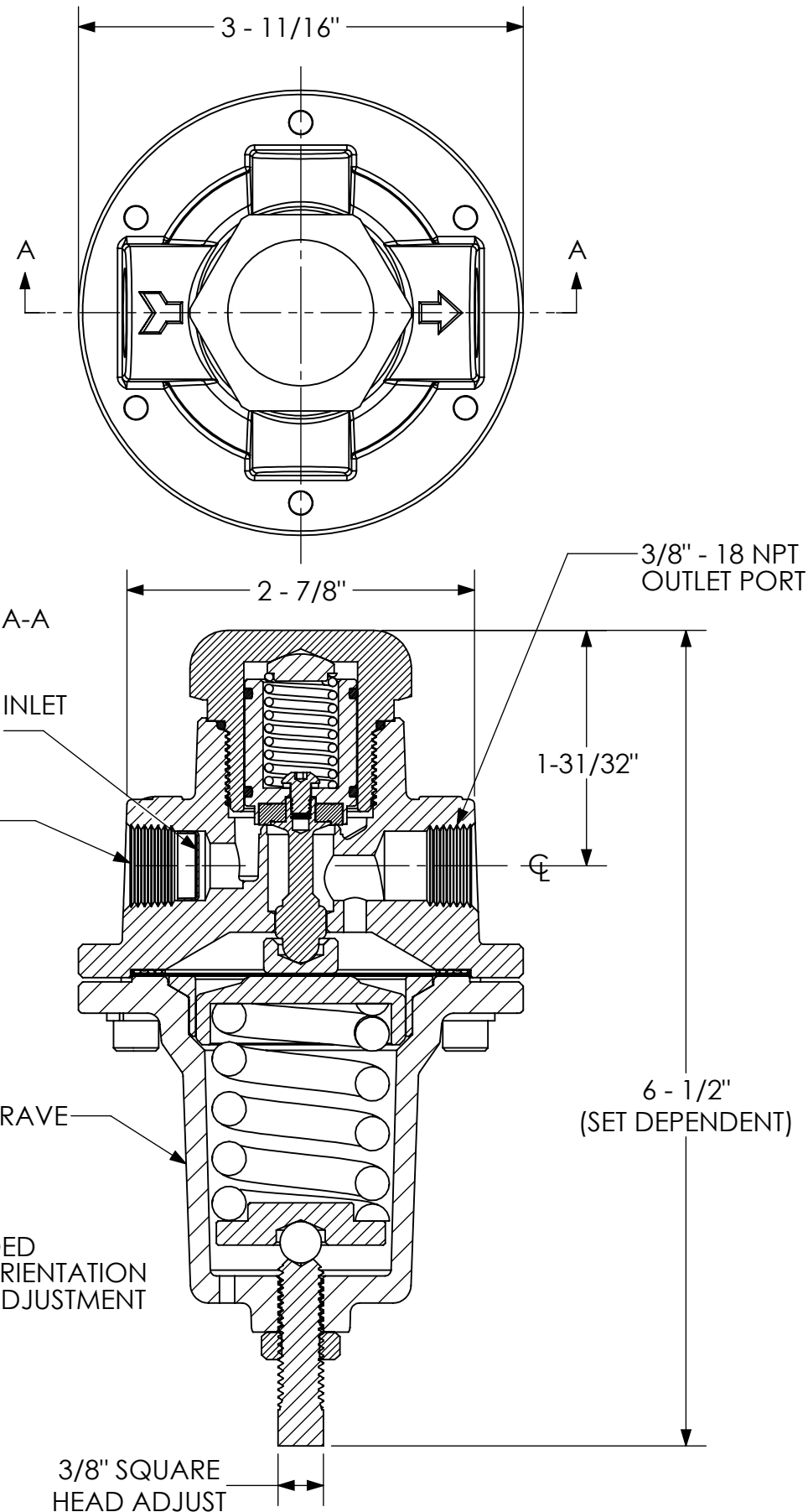
PROPER COMPONENT SELECTION – When specifying a component, the total system design must be considered to ensure safe and trouble-free performance. Intended component function, materials compatibility, pressure ratings, installation, environment and maintenance are the responsibility of the system designer.



[www.generant.com](http://www.generant.com)

1865 Route 23 South PO Box 768 Butler, New Jersey 07405 973.838.6500 Fax 973.838.4888

REVISIONS			
REV.	DESCRIPTION	DCR #	DATE
A	NEW DRAWING RELEASE	6067	3/14/2024



**MATERIALS OF CONSTRUCTION**

DESCRIPTION	PART NUMBER	MATERIAL
BLD REGULATOR BODY	BLD-1-2P-375	BRASS, ASTM B124
BLD SPRING CHAMBER	BLD-2-500-BH	BRASS, ASTM B124
BLD BOTTOM PLUG	BLD-3-500	BRASS, ASTM B16
BLD SPRING RETAINER, HP	BLD-4-500-HP	BRASS, ASTM B16
BLD SPRING BUTTON	BLD-5-500	303 SST, ASTM A582
BLD CHAMBER SEAL	BLD-6-500	Gylon (R), Style 3504
BLD VALVE	BLD-7A-500	BRASS, ASTM B16
BLD VALVE STEM	BLD-7B-500	BRASS, ASTM B16
BLD VALVE SEAL	BLD-7C-500	MODIFIED PTFE/TFM
BLD BRONZE DIAPHRAGM	BLD-8-500 (4)	Phos Bronze, ASTM B103
BLD VALVE SPRING BUTTON	BLD-9-500	BRASS, ASTM B16
BLD STEM CAP	BLD-10-500	BRASS, ASTM B16
BLD CHAMBER RING	BLD-11-500-HP	BRASS, ASTM B16
BLD SPRING	BLD-13-500-C	17-7 PH SST. ASTM A313
BLD VALVE SPRING	BLD-15-500	302 SST. ASTM A313
BLD ADJUSTMENT BALL BEARING	BALL03	440C SST. ASTM A276
BLD INLET SCREEN	SCREEN005	Monel Screen Mesh
BUTTON HEAD SCREW	SCR018	18-8 STAINLESS STEEL
SOCKET HEAD CAP SCREW	SCR031 (6)	18-8 STAINLESS STEEL
BLD ADJUSTMENT SCREW, LP	SCR044	18-8 STAINLESS STEEL
BLD LOCKNUT	NUT27	18-8 STAINLESS STEEL
SPRING LOCK WASHER	WASHER07	18-8 STAINLESS STEEL
SPRING LOCK WASHER	WASHER16 (6)	18-8 STAINLESS STEEL
TEFLON O-RING, SPLIT	018-T	PTFE, ASTM D3308
TEFLON O-RING	026-T	PTFE, ASTM D1710
3/8" NPT PULL PLUG (NOT SHOWN)	P-17 (2)	LDPE BLUE

**SPECIFICATIONS**

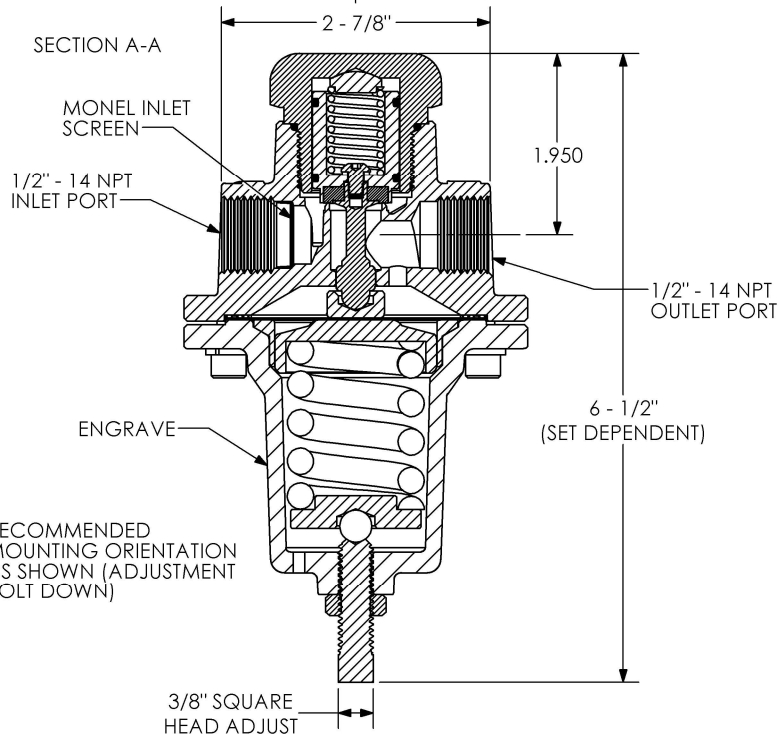
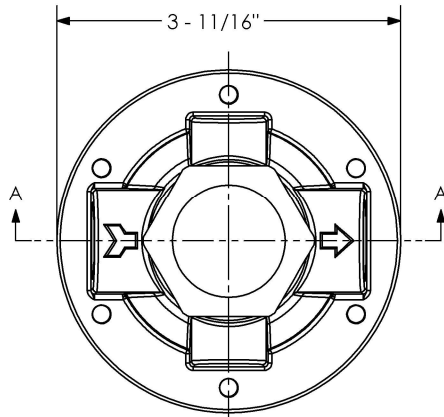
SET PRESSURE: 350 PSI  
 SET PRESSURE RANGE: 100 TO 350 PSI  
 TEMPERATURE RATING: -320° to 200°F  
 MAWP: 600 PSI INLET

ENGRAVING:  
 GENERANT COMPANY  
 PART NUMBER  
 MAX INLET PRESSURE  
 PRESSURE RANGE  
 DATE CODE

CLEANED AND PACKAGED FOR O2 SERVICE

MATL:	AS SPECIFIED	<b>GENERANT</b>
TOLERANCE SCHEDULE UNLESS OTHERWISE SPECIFIED	FRACTIONAL: ± 1/64" ANGLES: ± 1/2° XX ± .010 XXX ± .005 CONCENTRICITY: .005 T.I.R. FINISHED SURFACES: 63 Rq BREAK CORNERS/EDGES: .016 MAX	
TITLE:		3/8" BLD REGULATOR, C RANGE
DWG NUMBER:		2BLD-375B-C-350
DRAWN BY:	DATE:	SCALE:
HH	3/14/2024	.75:1
SIZE:	SHEET:	
B	1 of 1	

THIS DOCUMENT CONTAINS INFORMATION THAT IS CONFIDENTIAL AND PROPRIETARY TO GENERANT CO., INC. THIS DOCUMENT IS FURNISHED ON THE UNDERSTANDING THAT THE DOCUMENT AND INFORMATION IT CONTAINS WILL NOT BE COPIED OR DISCLOSED TO OTHERS EXCEPT WITH THE WRITTEN CONSENT OF GENERANT. IT WILL NOT BE USED FOR ANY PURPOSE OTHER THAN CONDUCTING BUSINESS WITH GENERANT, AND WILL BE RETURNED AND ALL FURTHER USE DISCONTINUED UPON REQUEST BY GENERANT.



**MATERIALS OF CONSTRUCTION**

DESCRIPTION	PART NUMBER	MATERIAL
BLD REGULATOR BODY	BLD-1-2P-500	BRASS, ASTM B124
BLD SPRING CHAMBER	BLD-2-500-BH	BRASS, ASTM B124
BLD BOTTOM PLUG	BLD-3-500	BRASS, ASTM B16
BLD SPRING RETAINER, HP	BLD-4-500-HP	BRASS, ASTM B16
BLD SPRING BUTTON	BLD-5-500	303 SST, ASTM A582
BLD CHAMBER SEAL	BLD-6-500	Gylon (R), Style 3504
BLD VALVE	BLD-7A-500	BRASS, ASTM B16
BLD VALVE STEM	BLD-7B-500	BRASS, ASTM B16
BLD VALVE SEAL	BLD-7C-500	3M TFM 1600
BLD BRONZE DIAPHRAGM	BLD-8-500 (4)	Phos Bronze, ASTM B103
BLD VALVE SPRING BUTTON	BLD-9-500	BRASS, ASTM B16
BLD STEM CAP	BLD-10-500	BRASS, ASTM B16
BLD CHAMBER RING	BLD-11-500-HP	BRASS, ASTM B16
BLD SPRING	BLD-13-500-C	17-7 PH SST, ASTM A313
BLD VALVE SPRING	BLD-15-500	302 SST, ASTM A313
BLD ADJUSTMENT BALL BEARING	BALL03	440C SST, ASTM A276
BLD INLET SCREEN	SCREEN004	Monel Screen Mesh
BUTTON HEAD SCREW	SCR018	18-8 STAINLESS STEEL
SOCKET HEAD CAP SCREW	SCR031 (6)	18-8 STAINLESS STEEL
BLD ADJUSTMENT SCREW, LP	SCR044	18-8 STAINLESS STEEL
BLD LOCKNUT	NUT27	18-8 STAINLESS STEEL
SPRING LOCK WASHER	WASHER07	18-8 STAINLESS STEEL
SPRING LOCK WASHER	WASHER16 (6)	18-8 STAINLESS STEEL
TEFLON O'RING, SPLIT	018-T	PTFE, ASTM D3308
TEFLON O'RING	026-T	PTFE, ASTM D1710
1/2" NPT PULL PLUG (NOT SHOWN)	P-22 (2)	LDPE BLUE

**SPECIFICATIONS**

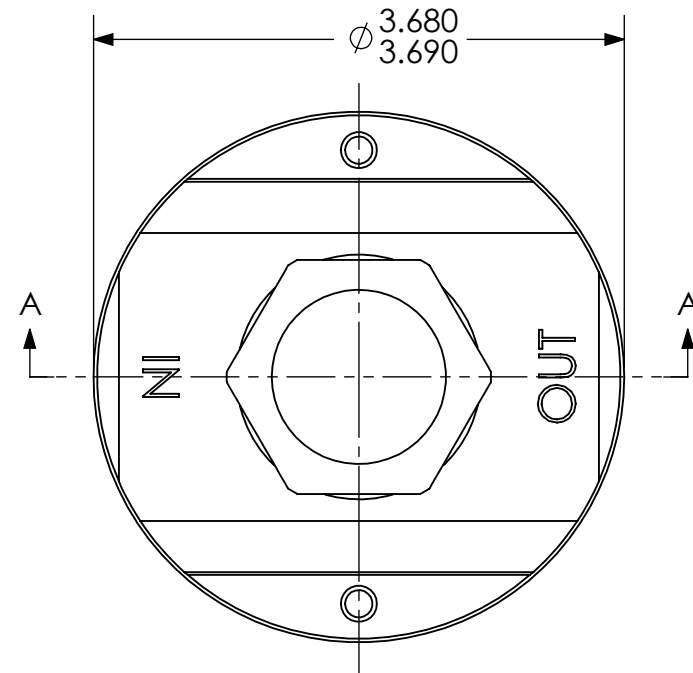
SET PRESSURE: 450 PSI ± 5 %  
 TEMPERATURE RATING: -320° to 200°F  
 MAWP: 600 PSI INLET  
 ENGRAVING:  
 GENERANT COMPANY  
 PART NUMBER  
 MAX INLET PRESSURE  
 PRESSURE RANGE  
 DATE CODE  
 CLEANED AND PACKAGED FOR O2 SERVICE  
 FULL OPEN Cv: 2.20

REVISIONS			
REV.	DESCRIPTION	DCR #	DATE
A	NEW DRAWING RELEASE	5522	8/22/2022
B	UPDATED PART NUMBER AND MATL FOR PULL PLUG	6059	2/2/2024

MATL: AS SPECIFIED	<b>GENERANT</b>			
TOLERANCE SCHEDULE UNLESS OTHERWISE SPECIFIED	TITLE: 1/2" BLD REGULATOR, D RANGE			
FRACTIONAL: ± 1/64" ANGLES: ± 1/2° XX ± .010 XXX ± .005	DWG NUMBER: 2BLD-500B-D-450			
CONCENTRICITY: .005 T.I.R. FINISHED SURFACES: 63 Ra BREAK CORNERS/EDGES: .016 MAX	DRAWN BY: HH	DATE: 8/16/2022	SCALE: .75:1	SHEET: 1 of 1

THIS DOCUMENT CONTAINS INFORMATION THAT IS CONFIDENTIAL AND PROPRIETARY TO GENERANT CO., INC. THIS DOCUMENT IS FURNISHED ON THE UNDERSTANDING THAT THE DOCUMENT AND INFORMATION IT CONTAINS WILL NOT BE COPIED OR DISCLOSED TO OTHERS EXCEPT WITH THE WRITTEN CONSENT OF GENERANT. IT WILL NOT BE USED FOR ANY PURPOSE OTHER THAN CONDUCTING BUSINESS WITH GENERANT, AND WILL BE RETURNED AND ALL FURTHER USE DISCONTINUED UPON REQUEST BY GENERANT.

REVISIONS			
REV.	DESCRIPTION	DCR #	DATE
A	NEW DRAWING RELEASE	6067	3/14/2024
B	UPDATED DRAWING	6125	5/23/2024



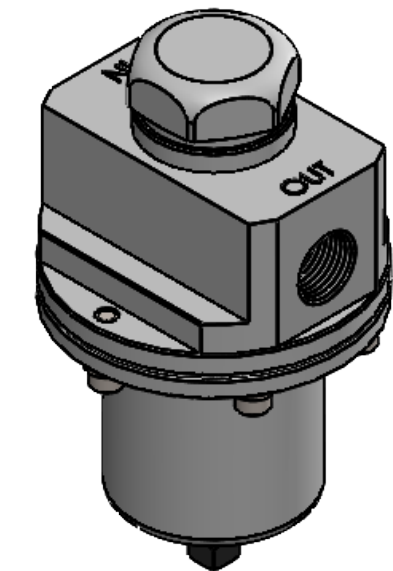
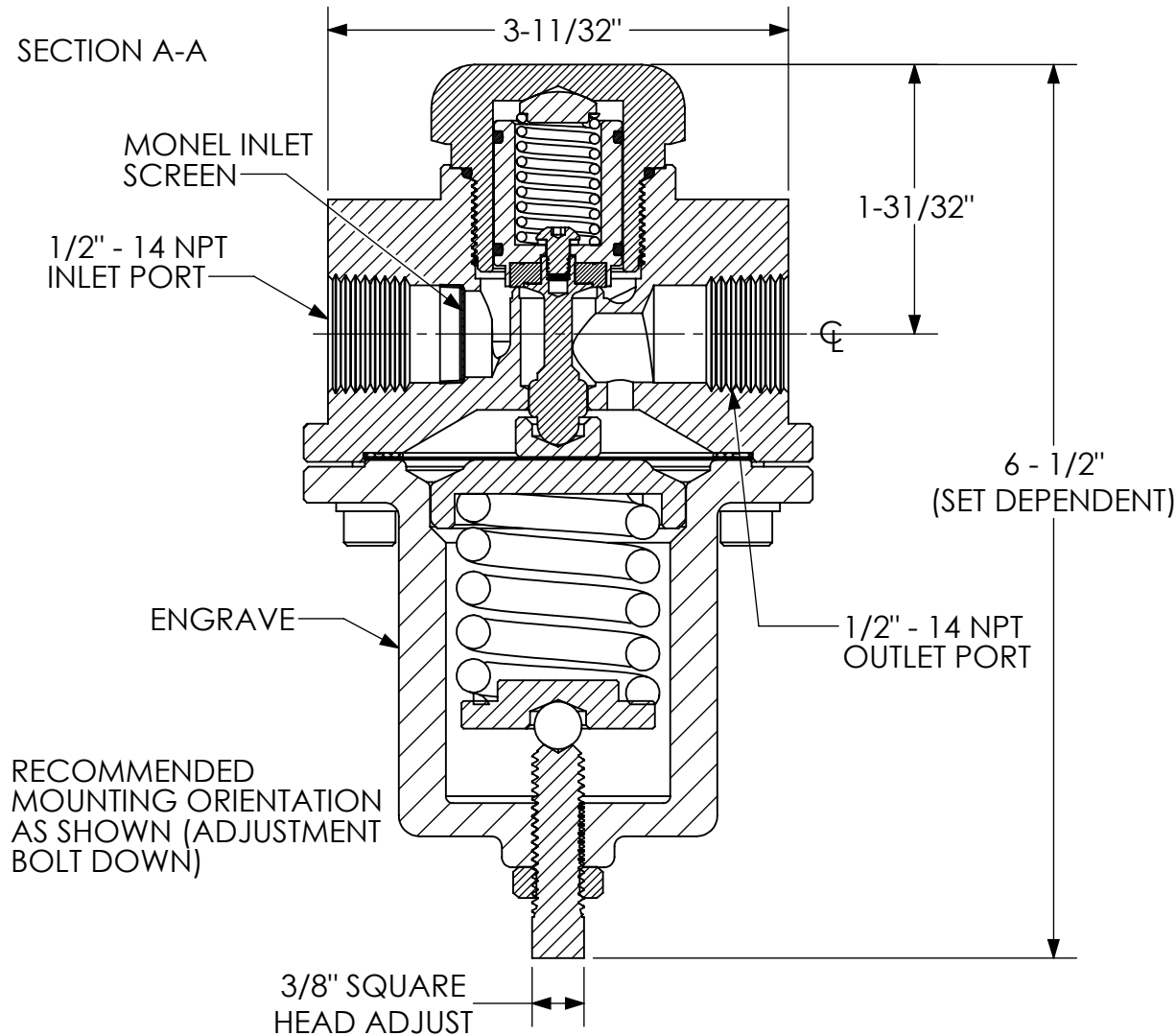
**MATERIALS OF CONSTRUCTION**

DESCRIPTION	PART NUMBER	MATERIAL
BLD REGULATOR BODY	BLD-1-2P-500SS	316 SST, ASTM A479
BLD SPRING CHAMBER	BLD-2-500SS-BH	316 SST, ASTM A479
BLD BOTTOM PLUG	BLD-3-500SS	316 SST, ASTM A479
BLD SPRING RETAINER, LP	BLD-4-500SS	316 SST, ASTM A479
BLD SPRING BUTTON	BLD-5-500	303 SST, ASTM A582
BLD CHAMBER SEAL	BLD-6-500	Gylon (R), Style 3504
BLD VALVE	BLD-7A-500SS	316 SST, ASTM A479
BLD VALVE STEM	BLD-7B-500SS	316 SST, ASTM A479
BLD VALVE SEAL	BLD-7C-500	MODIFIED PTFE/TFM
BLD STAINLESS DIAPHRAGM	BLD-8-500S (4)	304 SS, ASTM A276
BLD VALVE SPRING BUTTON	BLD-9-500SS	316 SST, ASTM A479
BLD STEM CAP	BLD-10-500SS	316 SST, ASTM A479
BLD SPRING	BLD-13-500-B	17-7 PH SST, ASTM A313
BLD VALVE SPRING	BLD-15-500	302 SST, ASTM A313
BLD ADJUSTMENT BALL BEARING	BALL03	440C SST, ASTM A276
BLD INLET SCREEN	SCREEN004	Monel Screen Mesh
BUTTON HEAD SCREW	SCR018	18-8 STAINLESS STEEL
SOCKET HEAD CAP SCREW	SCR031 (6)	18-8 STAINLESS STEEL
BLD ADJUSTMENT SCREW, LP	SCR044	18-8 STAINLESS STEEL
BLD LOCKNUT	NUT27	18-8 STAINLESS STEEL
SPRING LOCK WASHER	WASHER07	18-8 STAINLESS STEEL
SPRING LOCK WASHER	WASHER16 (6)	18-8 STAINLESS STEEL
TEFLON O'RING, SPLIT	018-T	PTFE, ASTM D3308
TEFLON O'RING	026-T	PTFE, ASTM D1710
1/2" NPT FEMALE PLUG (NOT SHOWN)	P-22 XLDPE BLUE (2)	LDPE BLUE

**SPECIFICATIONS**

SET PRESSURE: 125 PSI  
 SET PRESSURE RANGE: 50 TO 200 PSI  
 TEMPERATURE RATING: -320° to 200°F  
 MAWP: 600 PSI INLET  
 ENGRAVING:  
 GENERANT COMPANY  
 PART NUMBER  
 MAX INLET PRESSURE  
 PRESSURE RANGE  
 DATE CODE  
 CLEANED AND PACKAGED FOR O2 SERVICE  
 TEST 100% FOR EXTERNAL LEAKAGE

**SECTION A-A**



MATL:	AS SPECIFIED	<b>GENERANT</b>
TOLERANCE SCHEDULE UNLESS OTHERWISE SPECIFIED	FRACTIONAL: ± 1/64" ANGLES: ± 1/2° XX ± .010 XXX ± .005 CONCENTRICITY: .005 T.I.R. FINISHED SURFACES: 63 Ra BREAK CORNERS/EDGES: .016 MAX	
TITLE:		1/2" BLD REGULATOR, B RANGE
DWG NUMBER:		2BLD-500SS-B-125
DRAWN BY:	DATE:	SCALE:
HH	1/29/2024	.75:1
SIZE:	SHEET:	
B	1 of 1	

THIS DOCUMENT CONTAINS INFORMATION THAT IS CONFIDENTIAL AND PROPRIETARY TO GENERANT CO. INC. THIS DOCUMENT IS FURNISHED ON THE UNDERSTANDING THAT THE DOCUMENT AND INFORMATION IT CONTAINS WILL NOT BE COPIED OR DISCLOSED TO OTHERS EXCEPT WITH THE WRITTEN CONSENT OF GENERANT. IT WILL NOT BE USED FOR ANY PURPOSE OTHER THAN CONDUCTING BUSINESS WITH GENERANT, AND WILL BE RETURNED AND ALL FURTHER USE DISCONTINUED UPON REQUEST BY GENERANT.



## System certificate K-0206681/01

Issued	2022-08-19	Page	1 of 1
First Issue	2016-08-12	Expiry Date	2025-08-11
Replaces	QS /19102285	Previous Expiry	2022-08-11
		Recertification	2022-08-08

### ISO 9001: 2015

With this certificate Kiwa confirms that the management system implemented by

## **GENERANT COMPANY INC.**

meets the requirements of ISO 9001: 2015 for the scope:

Design, Production and Sales of Pressure Relief Devices, Pressure Regulators, Pressure & Flow Controls and Fluid Handling Accessories for Industrial and General Applications.

Ben De Graeve  
KIWA Belgium nv

*This certificate consists of 1 page.  
Publication of this certificate is allowed.*

# CERTIFICATE

520/150019

Kiwa Belgium N.V.  
Grotesteenweg 110  
2600 Berchem  
Belgium  
Tel. +32 3 259 06 60  
info@kiwa.be  
www.kiwa.be

#### **GENERANT COMPANY INC.**

##### **Registered Headquarters**

- 1865 Route 23 South, 07405 Butler NJ, United States

##### **Certified Sites**

-1 South Corporate Drive, 07457 Riverdale NJ, United States